



MANUEL D'UTILISATION / USER MANUAL / BEDIENUNGSANLEITUNG



ULTIMAIR MODEL

FR | Merci d'avoir acheté ce ventilateur colonne, ULTIMAIR EWT®. Vous pouvez être sûr qu'avec EWT®, vous avez acquis un produit de haute qualité conçu pour un fonctionnement optimal.

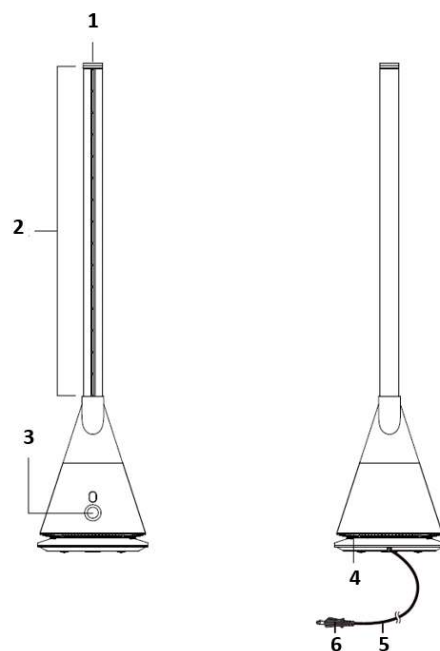
EN | Thank you for purchasing this tower fan, ULTIMAIR EWT®. You can be sure that with EWT®, you have bought a top-quality product which is designed for optimal performance.

DE | Vielen Dank für Ihren Kauf des Säulenventilator ULTIMAIR EWT®. Sie können sicher sein, dass Sie mit EWT® ein hochwertiges Produkt erworben haben, das so entworfen wurde, dass es optimal funktioniert.

FR

EN

DE



FR

1. Panneau de contrôle magnétique 2 en 1
2. Sortie d'air
3. Ecran d'affichage LED
4. Entrée d'air
5. Cable électrique
6. Prise électrique

EN

1. 2 in 1 magnetic control panel
2. Air outlet
3. LED display screen
4. Air inlet
5. Electrical cable
6. Electrical plug

DE

1. Magnetisches Bedienfeld 2-in-1
2. Luftaustritt
3. LED-Display
4. Lufteintritt
5. Stromkabel
6. Netzstecker

SAFETY ADVICES

IMPORTANT: THESE INSTRUCTIONS SHOULD BE READ CAREFULLY BEFORE USE AND RETAINED FOR FUTURE REFERENCE

- **DANGER! Never place the appliance beneath a source of water (rain, tap...), risk of electric shock.**
- **WARNING – DO NOT** use the appliance in the immediate surroundings of a bath, a shower or a swimming pool.
- Use appliance only for intended household use as described in this manual. Any other use not recommended by the manufacturer may cause a risk of fire, electric shock or injury.
- This appliance can be used by children aged from 8 years and above and persons with reduced physical, sensory or mental capabilities or lack of experience or knowledge if they have been given supervision or instruction concerning the use of the appliance in a safe way and understand the hazards involved. Children shall not play with the appliance. Cleaning and user maintenance shall not be made by children without supervision.
- Children of less than 3 years should be kept away unless continuously supervised.
- Children aged from 3 years and less than 8 years shall only switch on/off the appliance provided that it has been placed or installed in its intended normal operating position and they have been given supervision or instruction concerning the use of the appliance in a safe way and understand the hazards involved. Children aged from 3 years and less than 8 years shall not plug in, regulate and clean the appliance or perform user maintenance.
- **WARNING:** In order to avoid a hazard due to inadvertent resetting of the thermal cut-out, this appliance must not be supplied through an external switching device, such as a timer, or connected to a circuit that is regularly switched on and off by the utility.
- Never operate the appliance if a cable or connector has been damaged, after the appliance has malfunctioned or if the appliance was dropped or otherwise damaged in any way.
- Operate the appliance only at the voltage specified on the rating label.
- Only connect the appliance to an electrical supply, which complies with all applicable standards and has a delayed circuit breaker. Check that the maximum power of all of the appliances connected to this power supply does not exceed the maximum capacity of the circuit breaker (16A).
- If the supply cord is damaged, it must be replaced by the manufacturer, its service agent or similarly qualified persons in order to avoid a hazard.
- Do not use a multi-socket, extension lead or adaptor when plugging the appliance in as there is a potential risk of overheating and fire.
- For safety reasons, unplug the appliance when it is not being used and when no one will be present to supervise it for a long period.
- Do not use the appliance if the power cable is under the appliance. The plug must be accessible once the appliance is installed.
- Never pull on the power cable to move the appliance. Always ensure that the power cable is unconstrained when you move the appliance. Never wrap the power cable around the appliance.
- Ensure that the cable does not risk tripping anybody up.
- Do not cover the power cable with a rug, carpet, blanket...
- The socket-outlet must be accessible at all times to enable the mains plug to be disconnected as quickly as possible.
- Disconnect the appliance from mains power whenever it is not in use and before moving or relocating it.
- To unplug the appliance do not pull on the mains cable, grip the plug at the wall outlet and pull carefully.
- Switch the appliance off before unplugging it.
- Never place the equipment just below a wall plug or junction box.
- The appliance must be stored in a dry place, away from any sources of dampness and at a temperature of between 15°C and 25°C.
- Never immerse the appliance in water and never place it on water or any other liquid. Unplug the appliance immediately if it becomes damp or wet.
- Never use the appliance when you have wet or damp hands.
- Only use the appliance inside (indoors) and only for the purpose it was designed.
- Do not leave the appliance switched on without supervision.
- Do not place any objects on top of the appliance.
- Do not sit on the appliance.
- To avoid the risk of damage or a dangerous situation do not use this appliance or position any part of it near to heat, open flame, cooking

appliances or any heating appliance.

- Always use the appliance in a vertical position.
- Be careful of the potential damage that can be caused by the appliance's sharp edges.
- Always unplug the appliance before cleaning it.
- WARNING: Do not cover the appliance. Do not place any materials or clothes on the appliance or impede the circulation of air around the appliance.
- DO NOT BLOCK THE VENTILATION! Regularly check that the air intakes and outlets are not obstructed.
- Do not place the air intake close to walls or curtains (1m). Obstruction of the airflow may reduce the appliance's efficiency.
- Do not put any objects through the protective fan guard (finger, pen, tool...)
- DO NOT attempt to repair or adjust any electrical or mechanical functions on this unit. Doing so will void your warranty. The inside of the unit contains no user serviceable parts. All servicing should be performed by qualified personnel only.
- WARNING: To reduce the risk of fire or electric shock, do not use this appliance with any solid-state speed control device.
- WARNING: To avoid danger of suffocation please remove all packaging materials particularly plastic and EPS and keep these away from vulnerable people, children and babies.
- WARNING: To avoid the risk of accidental strangulation from the supply cord all children and vulnerable people must be supervised when near the product whether it is working or not.
- Do not drop any objects into the openings. Do not insert any objects into the openings.
- Do not unplug the appliance by pulling on the power cable.
- Do not place the appliance on an unstable surface such as a bed or a sofa. The appliance may tip over and block the air intake or outlet.

SPECIFICATIONS

Model	ULTIM'AIR
EAN code	3 046 171 904 744
Power	26W
Air flow	2700 m3/h
Number of speed	9
LED screen	Yes – touch control
Column material	Aluminium
Remote control	Yes, 2 in 1 magnetic control panel (CR2025 battery)
Oscillation	Yes – 90° Automatic
Night Mode	Yes – Silent
Turbo mode	Yes
Timer	8H
Handle	No
Sound level	48 dB
Voltage	DC 5V Motor
Product dimensions (WxDxH)	W23 x D23 x H96 cm
Product weight	2.6 kg

INSTRUCTIONS OF USE

BEFORE USING THE APPLIANCE FOR THE FIRST TIME :

1. Please read these instructions carefully before using the appliance and keep them for future use.
2. Check that the voltage of your local electricity network complies with the one which appears on the appliance.
3. Before using the appliance for the first time, **remove the appliance's protective films, sticker or any other advertising item.**

CONTROL USING TOUCHSCREEN ON THE BASE OF THE APPLIANCE

The appliance can be controlled using the LED display screen (3) on its base or using the 2-in-1 magnetic control panel (1).

Once the appliance is plugged in, it will be automatically set to standby mode.

⏻ APPLIANCE ON/OFF

To switch the appliance on, press the LED display screen on the base of the appliance.

To switch the appliance off, long press the LED display screen on the base of the appliance.

Oscillation mode will be activated before it switches off. Make sure that you keep pressing the LED display screen until the appliance has gone into standby mode.

⚙️ SPEED CONTROL

To control the ventilation speed of the appliance, press the LED touchscreen. Every quick press on the LED touchscreen will increase the speed from speed 1 towards speed 9.

Turbo ⚙️ and Night 🌙 ventilation modes are activated using the 2-in-1 magnetic control panel (1).

🌀 OSCILLATION

To activate oscillation of the appliance, press the LED touchscreen for 1 second. A sound will be emitted to signal that automatic oscillation has been switched on.

Press the LED touchscreen again for 1 second to switch oscillation

off. A sound will be emitted to signal that automatic oscillation has been switched off.

To activate oscillation, do not press the LED touchscreen for longer than 1 second, otherwise the appliance will go into standby mode.

NOTE: The LED touchscreen will automatically switch off when it is not pressed for a period of 20 seconds.

NOTE: Use the 2-in-1 magnetic control panel in order to benefit from all of the appliance's functions.

2 IN 1 MAGNETIC CONTROL PANEL



The appliance has a 2-in-1 magnetic control panel. It can be used as a control panel when it is attached to the top of the appliance via use of magnets.

You can also remove it from the appliance and the control panel will become a remote control, allowing you to fully control the appliance remotely.

CONTROL USING THE MAGNETIC CONTROL PANEL

⏻ Appliance On/Off

Press the ⏻ button to switch the appliance on or off.

🌀 Oscillation

Press the 🌀 button to activate oscillation of the appliance. A sound will be emitted to signal that automatic oscillation of the appliance has been switched off. Press the button again to switch automatic oscillation off, at which point a sound will be emitted to signal that this has occurred.

🕒 Timer

Press the 🕒 button to activate the timer in order to programme the appliance to switch off. The timer can be set for a period of between 1 and 8 hours.


+ – Speed control

+ Press this button to increase ventilation speed.

– Press this button to reduce ventilation speed.


The appliance has 9 ventilation speeds.

Turbo Mode

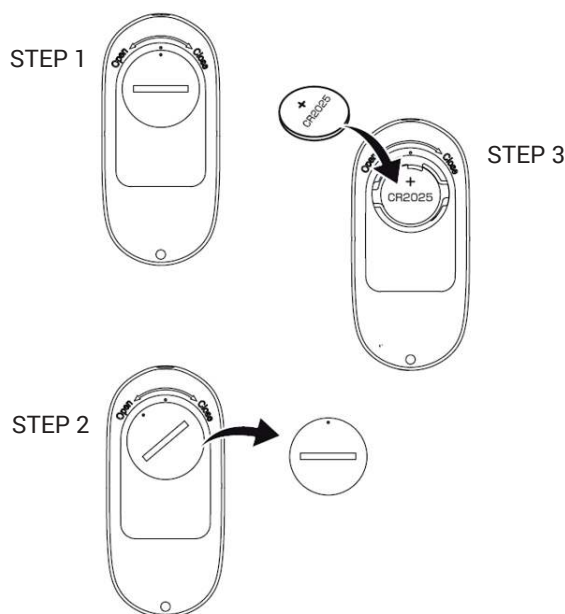
Press the  button to activate Turbo Mode. The letter "H" will be displayed on the touchscreen to signal that Turbo mode has been selected.

In Turbo Mode, you will benefit from extra ventilation thanks to an ultrapowerful air flow.

Night Mode

Press the  button to activate Night Mode. The letter "L" will be displayed on the touchscreen to signal that Night Mode has been selected.

In Night Mode, you will benefit from efficient and silent ventilation. An ideal mode for you to enjoy all of the benefits of a fan at night without disturbing your sleep.



1. When inserting or removing the batteries, please consult the diagram below. Pay attention to the guide on the lid explaining the positioning of the positive and negative symbols on the battery.
2. Remove the protective cover from the battery slot of your remote control and place the CR 2025 3V battery inside.
3. Avoid dropping the remote control or allowing it to fall to the floor.
4. Batteries contain materials that are dangerous for the environment. When disposing of the appliance, the batteries must be removed from the remote control and disposed of in an appropriate place - Please refer to recycling section.

CLEANING AND MAINTENANCE

- Always unplug the appliance before cleaning it.
- Clean the surface of the appliance using a soft cloth, do not use any water.
- If the appliance is very dirty, clean the surface using a damp cloth (add a non-corrosive cleaning product if required).
- Do not use corrosive detergents, corrosive solvents or chemical products.
- Do not use an abrasive sponge, scouring pad or hard brush to clean the appliance.
- Do not immerse the main body of the appliance into water.
- Ensure that the motor and the other electrical components do not come into contact with water.
- If the appliance is not to be used for a long period, pack it away carefully. Store it in a dry and ventilated area where it will not be affected by dust.

- Clean the outer grill using a non-corrosive detergent and a soft brush.

THIS APPLIANCE IS SOLELY DESIGNED FOR DOMESTIC USE

WARRANTY

This EWT® appliance comes with a two- (2) year warranty which begins on the date of purchase and only applies to use under normal conditions. The warranty does not apply to damage incurred as a direct or indirect result of inappropriate use, negligence, improper use, accidents, improper repairs or lack of maintenance. Please keep your receipt/invoice as proof of purchase.

The accessories which come with this are consumables and the warranty pertaining to them is limited to one (1) month.

EXCLUSIONS FROM WARRANTY

- Modifications, disassembly or integration into another machine or assembly making the appliance fixed or semi-fixed,
- Normal wear and tear of parts,
- Deterioration following incorrect use,
- Failure to respect the instructions manual or the maintenance and safety instructions,
- Damage arising from faulty maintenance or lack of maintenance,
- Damage caused by exterior factors (lightning...),
- Abnormal use of the machine,
- Storage in poor/inappropriate conditions,
- Impacts,
- Immersion of the appliance
- Use of parts or accessories which are not approved and certified by Glen Dimplex Consumer Appliance,
- Expiry of warranty.

SCRAPPING



In compliance with European Directive 2012/19/EU regarding electrical and electronic equipment (WEEE), this equipment is marked with the crossed-out dustbin symbol which indicates that the product should not be disposed of with household waste.

It should be delivered to an appropriate collection point for processing, valuation, recycling of EEE waste (obtain information from your local town or city hall) or returned to a distributor on a "1 for 1 free" basis (recovery by the distributor does not entitle you to any payment or discount).

By taking this action in favour of the environment, you, as a consumer or user, will be making a contribution to the preservation of natural resources and the protection of human health.

INFORMATION ABOUT USING BATTERIES

Disposing of a used battery into the environment or along with household waste is a source of pollution and prevents recovery of materials which are of value and can be reused. It is therefore important to restrict your consumption of batteries and to respect the following instructions:

1. Favour alkaline batteries (which last longer than saline ones) and, whenever possible, rechargeable batteries.
2. Place used batteries and storage batteries in the specified containers which can be found in shops. The metals the batteries contain can thus be valued and reused and they will not pollute the environment as they contain heavy metals which are dangerous both to health and the environment (mainly cadmium and nickel)

When the battery is worn out, replace it with a CR2025 3V battery.

INFORMATION RELATING TO ECO-DESIGN OF FANS

Information required for fans, in compliance with regulation (EU) No 206/2012 in application of Directive 2009/125/EC by the European Parliament and Council concerning the eco-design requirements applicable to air conditioners and fans.

Model	ULTIMAIR		
Description	Symbol	Value	Unit
Maximum fan flow rate	F	22.5	m ³ /min
Power consumption	P	23.2	W
Service value	SV	0.97	(m ³ /min)/W
Consumption of electricity in standby mode	PSB	0.44	W
Sound power level	LWA	56	dB(A)
Maximum air velocity	c	4.6	meter/sec
Measurement standard of service value	(EU) No 206/2012 + (EU) 2016/2282 EN 50564:2011 EN ISO 5801:2017 EN 60704-1:2010+A11:2012 EN 60704-2-7:1998		
Contact	GLEN DIMPLEX FRANCE 12 boulevard du Mont d'Est 93160 NOISY-LE-GRAND France		



Έκθεση - Τεχνική Υποστήριξη

Συγγρού 2 & Παλαιολόγου, 15232 Χαϊδάρι

Τηλ.: 210 68.30.351 - 352, Fax: 210 68.39.848

www.sieline.gr • e-mail: info@sieline.gr