

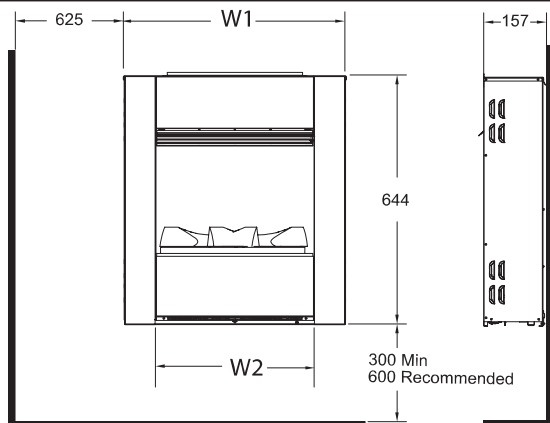
OPTIMYST WALL ENGINE

ENGDL20

ENGDL20L



08/51579/0 Issue 3



MODEL	'W1'	'W2'
ENGDL20	564mm	400mm
ENGDL20L	708mm	543mm

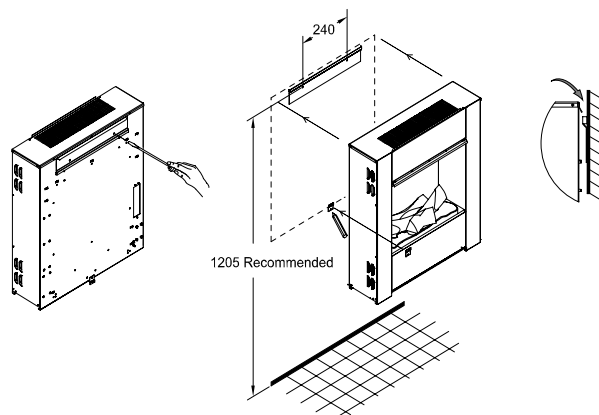


Fig.1

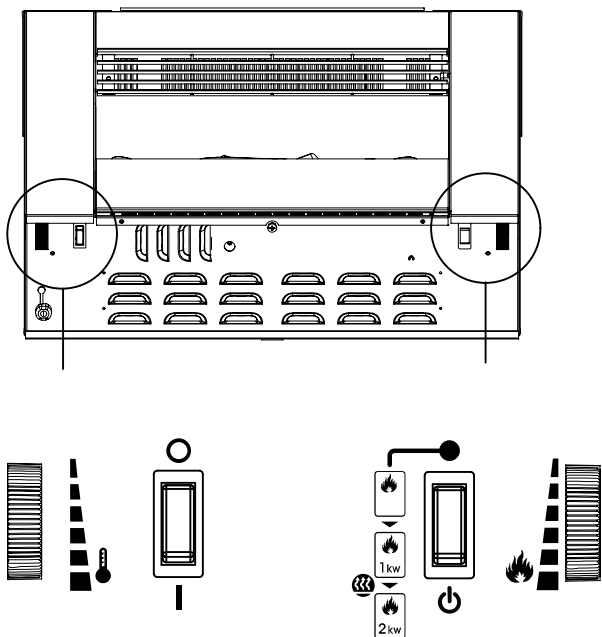


Fig.2

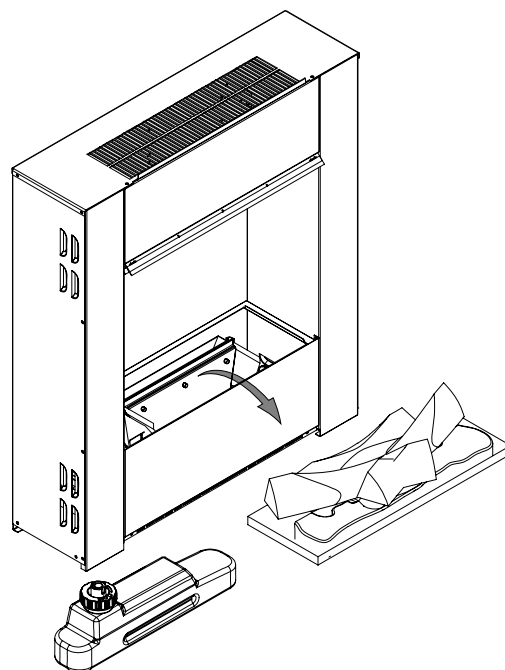


Fig.3

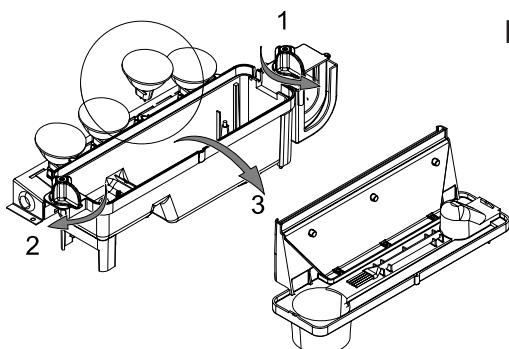


Fig.4

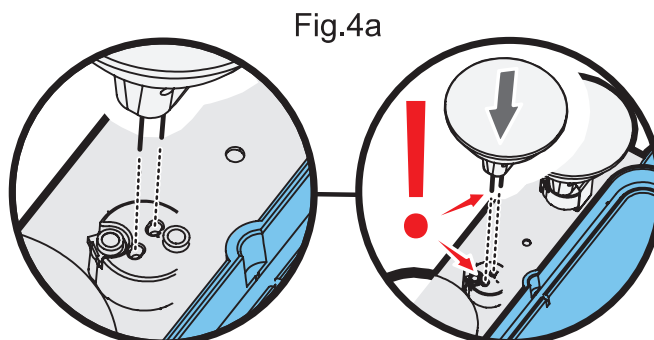


Fig.4a

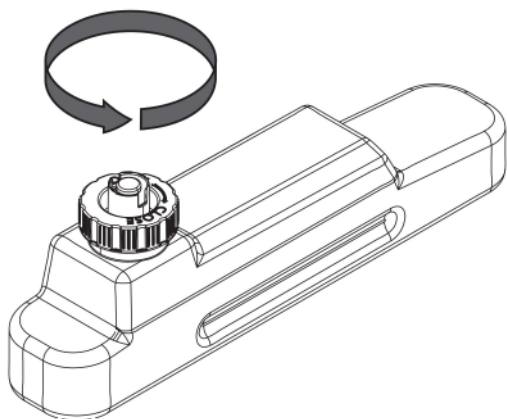


Fig.5

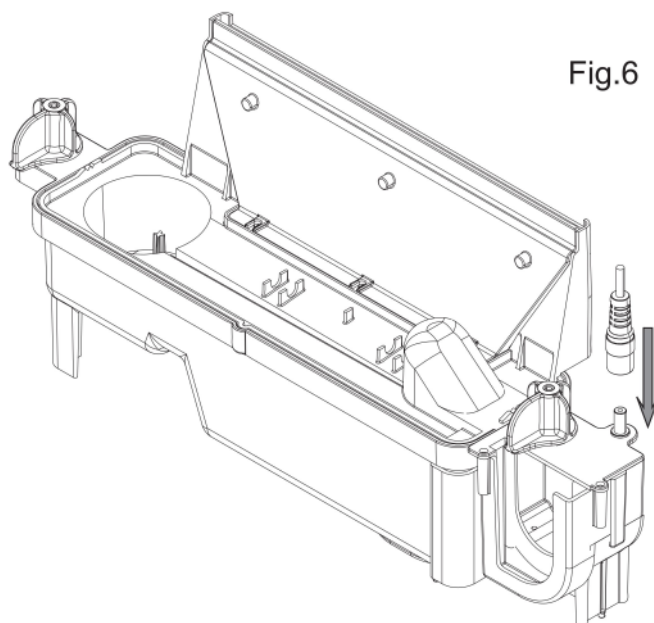


Fig.6

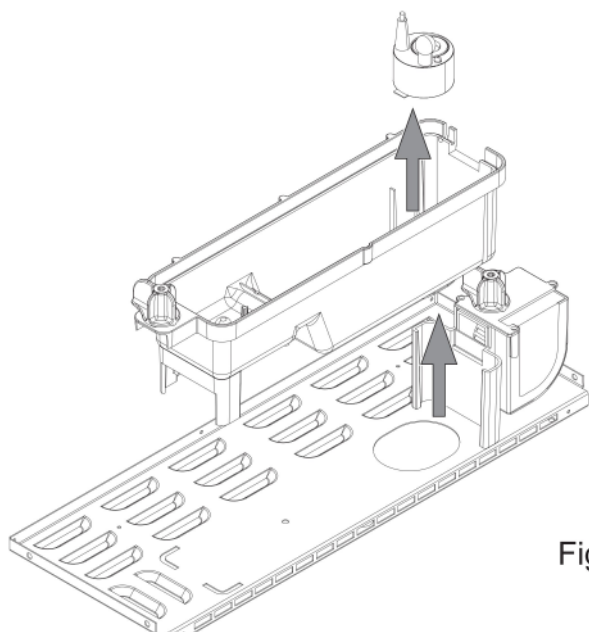


Fig.6a

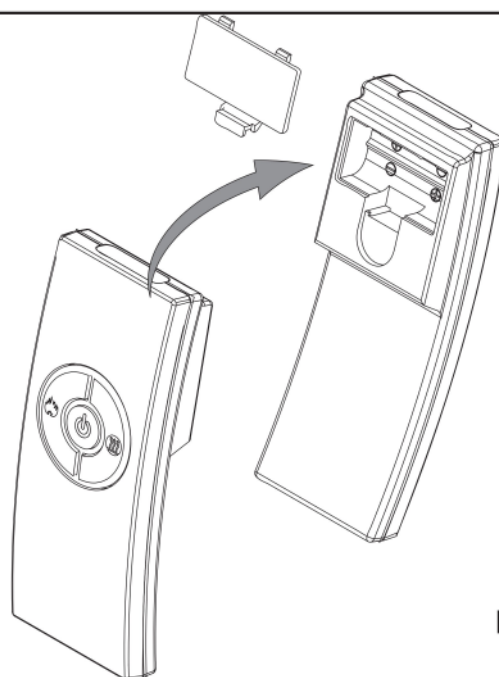


Fig.7



Fig.8

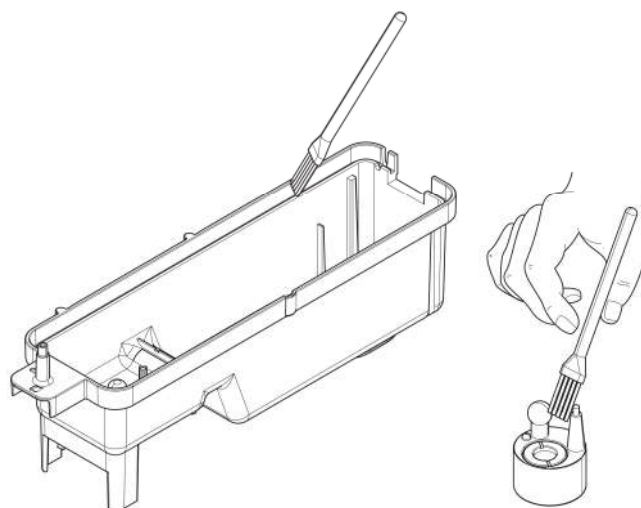


Fig.9

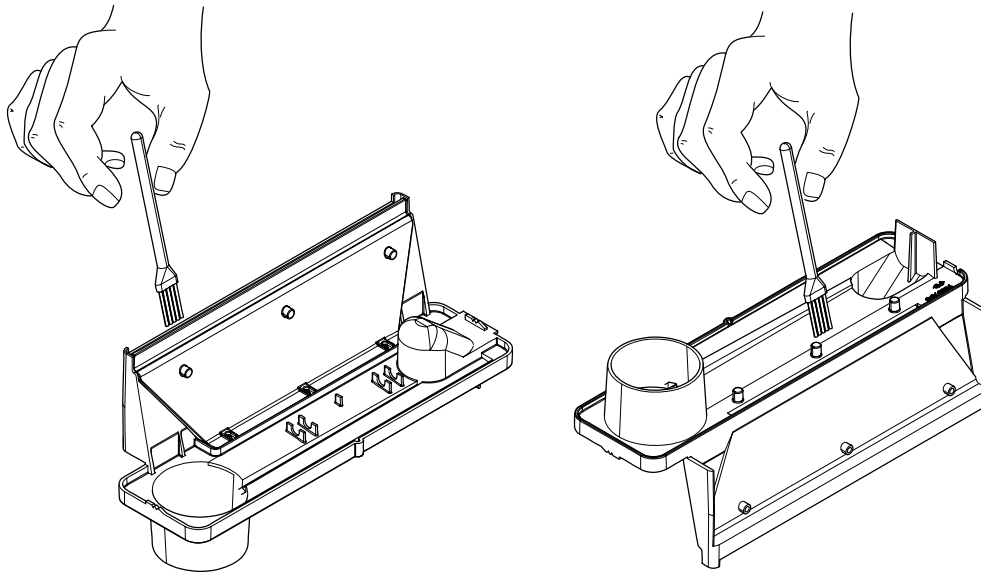


Fig.10

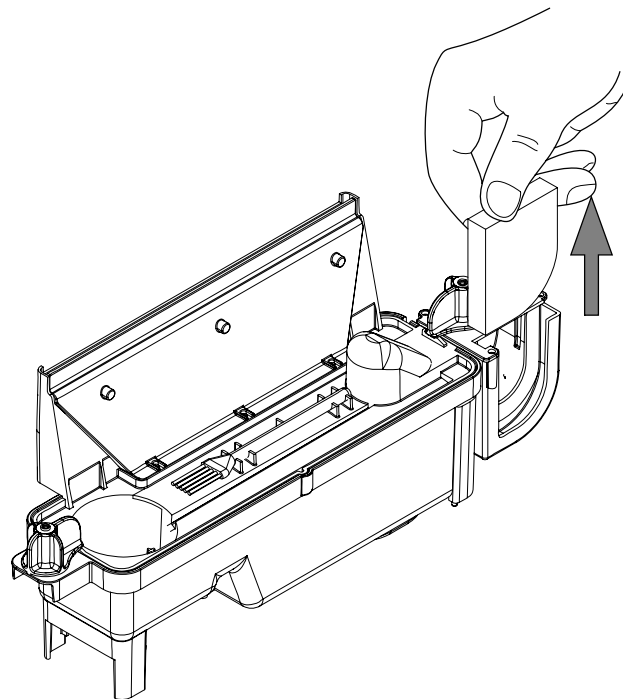


Fig.11

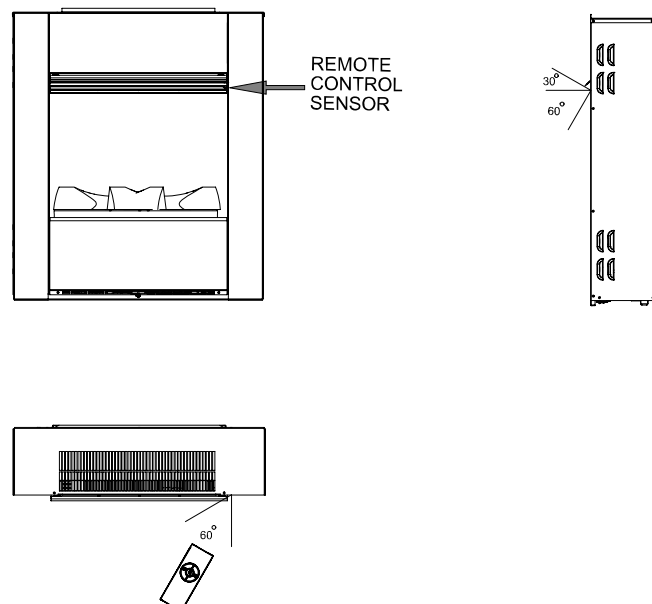


Fig.12

Model: ENGDL20, ENGDL20L

IMPORTANT: THESE INSTRUCTIONS SHOULD BE READ CAREFULLY AND RETAINED FOR FUTURE REFERENCE**Important Safety Advice**

When using electrical appliances, basic precautions should always be followed to reduce the risk of fire, electrical shock and injury to persons, including the following:

1. OVERHEATING

WARNING: In order to avoid overheating, do not cover the heater. Do not place material or garments on the heater, or obstruct the air circulation around the heater. The heater carries a **DO NOT COVER** warning.

2. DAMAGE.

If the appliance is damaged, check with the supplier before installation and operation.

If the supply cord is damaged it must be replaced by the manufacturer or service agent or a similarly qualified person in order to avoid a hazard.

3. LOCATION

Do not use outdoors.

Do not use in the immediate surroundings of a bath, shower or swimming pool.

Do not locate the heater immediately below a fixed socket outlet or connection box.

Ensure that furniture, curtains or other combustible material are positioned no closer than 1 metre from the heater.

Although this heater conforms with safety standards, we do not recommend its use on deep pile carpets or on long hair type of rugs.

4. PLUG POSITIONING

The appliance must be positioned so that the plug is accessible.

Keep the supply cord away from the front of the heater.

5. USE OF OTHER CONTROLS

Do not use this heater in series with a thermal control, a program controller, a timer or any other device that switches on the heat automatically, since a fire risk exists when the heater is accidentally covered or displaced.

6. UNPLUGGING

In the event of a fault unplug the device.

Unplug the device when not required for long periods.

7. OWNER/USER

This appliance can be used by children aged from 8 years and above and persons with reduced physical, sensory or mental capabilities or lack of experience and knowledge if they have been given supervision or instruction concerning use of the appliance in a safe way and understand the hazards involved. Children shall not play with the appliance. Cleaning and user maintenance shall not be made by Children without supervision.

Children of less than 3 years should be kept away unless continuously supervised. Children aged from 3 years and less than 8 years shall only switch on/off the appliance provided that it has been placed or installed in its intended normal operating position and they have been given supervision or instruction concerning use of the appliance in a safe way and understanding the hazards involved. Children aged from 3 years and less than 8 years shall not plug in, regulate and clean the appliance or perform user maintenance.

8. ELECTRICITY

WARNING – THIS APPLIANCE MUST BE EARTHED.

This heater must be used on an AC ~ supply only and the voltage marked on the heater must correspond to the supply voltage. Before switching on, please read the safety advice and operating instructions.

CAUTION — Some parts of this product can become very hot and cause burns. Particular attention has to be given where children and vulnerable people are present.

WARNING - In order to avoid overheating, do not cover the appliance

GENERAL INFORMATION

Carefully unpack the fire and save the packaging for any future use (in case of moving house or returning the fire to the supplier).

The fire has a flame effect that can be used with or without the heating.

Before connecting the fire, check whether the supply voltage is the same as the voltage indicated on the fire.

Note: If you use the fire in an area with little background noise, you may hear a sound when the fire is turned on with the flame effect. This is normal so do not worry.

KEEP THIS MANUAL FOR FUTURE REFERENCE

Use only water with a hardness of maximum 10dH. Ask your water company what is the hardness of your tap water. Decalcify the water or use demineralised water in case of a higher level of hardness.

If you don't use the fire for 2 weeks or longer, we advise you to remove the water from the receptacle and the filling tank and to dry the receptacle.

Once the fire is in use, it may not be moved or set on its back without removing the water from the receptacle and the water tank.

The water tank, receptacle, receptacle cover, tank cover and air filters should be cleaned once a fortnight - in the case of intensive use of more than 2 hours per day they should be cleaned weekly.

Never use the apparatus if the lamps do not work.

The lamps should be checked regularly as described in 'Maintenance' and 'Replacing the lamps'.

Installation Instruction

Installation

Make sure that all packaging is removed. (Read the warning labels carefully.)

Save the packaging for any future use.

Make sure that the apparatus is spirit-level mounted on the wall.

Installation of the fire (see Figure 1)

1. Remove the wall bracket at the backside of the apparatus by removing the two screws with which the wall bracket is attached.

2. Mount the wall bracket on the wall using the supplied plugs and screws for concrete walls. Make sure that it is spirit level.

3. Hang the apparatus from the mounted wall bracket. Turn the safety mounting bracket at the bottom of the product in such a way that the mounting hole is visible. Mark the location of this hole and remove the apparatus from the wall. Drill a hole and place a plug in the wall in the indicated position.

4. Hang the apparatus back on the wall bracket attached to the wall. Secure the apparatus by means of a screw through the safety mounting bracket.

Make sure that the fire is **OFF**:

Insert the plug of the fire into a wall socket.


You have to fill the water reservoir before you use the control knobs (see 'Maintenance', 'Filling the water reservoir').


Operating the Fire


The manual control of the Opti-myst is located at the bottom of the apparatus. (See Figure 2 for a diagram of the manual control.)

Switch 'A': This is the main switch of the fire.


Remark: This switch must be in the 'ON' (I) position, because the fire will not work otherwise.

Switch 'B': Push  once to turn on the flame effect. The heating will remain off. This is indicated by a single beep. Although the main lamps will work immediately, it takes another 30 seconds before the flame effect starts to function.

Push  again to combine the flame effect with the heating on 50% of the capacity. This is indicated by two beeps.

Push  again to combine the flame effect with the heating on maximum capacity. This is indicated by three beeps.

Push  again to return to only the flame effect. This is indicated by a single beep.

Push  to set the fire on standby. This is indicated by a single beep.

Control knob 'C': regulates the setting of the thermostat.

Turning the knob towards you lowers the temperature setting. Turning the knob away from you increases the temperature setting.

Control knob 'D': regulates the intensity of the flame and the smoke effect when the fire is turned on.

Turning the control knob towards you reduces the intensity of the flame and the smoke effect. Turning the control knob away from you increases the intensity of the flame and the smoke effect.

If the water reservoir is empty, the main lamps will turn off. See the instruction in 'Maintenance', 'Filling the water reservoir'. When this procedure is completed, the main lamps will turn on, but it takes another 30 seconds before the flames will turn on again.

Setting the thermostat

Insert the plug in the wall socket and put the fire in the highest heating position. Turn the control knob 'C' completely away from you (maximum temperature setting) to heat the room quickly. Once the room has reached the desired temperature, you turn the thermostat knob slowly towards you until you hear a click. This indicates that the thermostat has turned off. The thermostat of the fire ensures that the room temperature stays at the selected level.

Note: If your fire does not fire up with the thermostat on a low setting, the room temperature might be higher than the thermostat setting.

Thermal safeguard

A limiting mechanism is built in the fan heater as a thermal safeguard to prevent damage caused by overheating. This can occur if the heat exhaust is blocked in any way. If the limiting mechanism starts to operate, you must pull the plug of the fire out the wall socket. Wait approx. 10 minutes before you re-insert the plug. However, prior to turning on the fire, you must remove the obstacles that block the heat exhaust.

Caution: To prevent fire hazard caused by unintentional setting of the thermal safeguard, the apparatus may not be supplied with power via an external switch (timer, etc.).

Tips for using the fire

1. The Opti-myst flame and smoke effect will last for approximately 9hrs when the product is turned to full flame, and approximately 12hrs when set at minimum. These times are a guideline only and can vary.
2. Do not tilt or move the fire when there is water in the water reservoir or receptacle.
3. Make sure that the stove is attached spirit level to the wall.
4. The flame control knob 'D' (Figure 2) can be turned higher or lower for a more realistic effect.
5. Sometimes the flames look more natural if the flame control knob is turned to a low setting.
6. Give the flame mechanism some time to respond to the changes that you make with the flame control knob.

Using the remote control

On the control panel, the switch 'A' (see Figure 2) must be set to the ON (I) position so that the remote control functions. The remote control has three buttons (see Figure 7). The remote control should point to the heat exhaust in order to function properly (see Figure 12). The remote functions are as follows:



Push this button once to turn on the flame effect.
This is indicated by a single beep.



Push this button to get the flame effect and heating on 50% capacity.
This is indicated by two beeps.
Push this button again to get the flame effect and heating on maximum capacity.
This is indicated by three beeps.



Standby
This is indicated by a single beep.

Maintenance

Maintenance

WARNING: ALWAYS UNPLUG BEFORE CARRYING OUT MAINTENANCE

Replacing the lamps

If a large amount of smoke looks grey or colourless, one or more lamps might be defective.

You can check defective lamps as follows:

1. While leaving the flame effect turned on, remove the fuel bed and water reservoir (see Figure 3) and remove the adapter (see Figure 4).
2. Look at the lamps from a distance in front of the fire and determine which lamps should be replaced.
3. Put switch 'A' in the OFF (0) position (see Figure 2) and pull the plug out the wall socket.
4. Let the lamps cool off for 20 minutes before you remove them.
5. Remove the water reservoir by lifting it and place it in the kitchen sink.
6. Remove the receptacle as described in the chapter 'Cleaning'.

7. Remove the defect lamp by vertically lifting it carefully and by pulling it out of the plug pins of the lamp holder (see Figure 4 and 4a). Replace it with a coloured Gu5.3 basic Opti-myst lamp of 12V, 45W and 8° radiation angle, available from your dealer or from Faber International, telephone +31 (0) 513656500.
8. Put the two plug pins of the new lamp in the two holes of the lamp holder. Push the lamp into place (see Figure 4 and 4a).
9. Put the adapter, water reservoir and fuel bed back.
10. Turn on the fire.

Filling the water reservoir

If the water reservoir is empty, the flame and smoke effect will stop and you will hear two beeps. In that case, follow these steps:

1. Put switch 'A' in the OFF position (**0**). (See Figure 2)
2. Carefully remove the fuel bed and put it carefully on the floor (see Figure 3).
3. Remove the water reservoir by lifting it straight up.
4. Put the water reservoir in the kitchen sink and turn the cap counterclockwise in order to open the reservoir. (See Figure 5)
5. Only fill the reservoir with **sufficiently soft (<10dH) or demineralised water**. This is needed to guarantee the lifespan of the flame and smoke mechanism.
6. Close the cap by screwing it back on, **but don't turn it too tightly**.
7. Place the reservoir back on the receptacle while the reservoir's cap is pointing downwards and the flat side of the reservoir is pointing outwards.
8. Carefully put the fuel bed back.
9. Put switch 'A' in the ON position (**I**). (See Figure 2)

Cleaning

WARNING: ALWAYS UNPLUG BEFORE CLEANING THE FIRE

We recommend to clean the following parts once per fortnight and - in the case of intensive use of more than 2 hours per day - once per week, especially in regions with hard water:

water reservoir, receptacle, adapter, air filter, reservoir cap and valve.

For general cleaning, use a soft and clean cloth - never use abrasive cleaning agents. Occasionally use the auxiliary brush of a vacuum cleaner to remove dust and fluff from the exhaust grill of the fan.

Water reservoir

1. Remove the water reservoir as described above, put it in the kitchen sink and drain the water.
2. Use the supplied brush to brush the inside of the cap. Pay special attention to the rubber ring in the outer groove and the middle rubber seal.
3. Pour a little bit of dishwashing liquid into the reservoir, put the cap back, shake well and rinse until all traces of the dishwashing liquid have disappeared.
4. Fill the reservoir only with filtered tap water, put the cap back and don't turn it too tightly.

Receptacle

1. Put switch 'A' in the OFF (**0**) position.
2. Carefully remove the fuel bed and put it carefully on the floor (see Figure 3).
3. Remove the water reservoir by lifting it.
4. Disconnect the electrical connection at the right side of the receptacle (see Figure 6).
5. Loosen the right locking lips of the receptacle by turning these 90°. This way the entire receptacle can be removed (see Figure 6a).
6. Carefully lift the receptacle. Make sure you keep it straight so that you don't spill water. Put the receptacle in the kitchen sink.
7. Loosen the left locking lips of the receptacle by turning these 90° and remove the adapter (see Figure 4).
8. Remove the transducer and carefully keep the receptacle slanted (as illustrated) so that the liquid runs out the receptacle (see Figure 8).
9. Pour a little bit of dishwashing liquid into the receptacle and use the supplied brush to clean all surfaces in the receptacle carefully. Do this also to the transducer including the metal disks located in the upper groove area (see Figure 9).
10. Rinse the receptacle and transducer well with clean water after cleaning.
11. Clean the surface of the smoke exhaust of the receptacle's cover using the brush and rinse well with water (see Figure 10).
12. To mount everything, carry out the aforementioned steps in reverse order.

Air filter

1. Put switch 'A' in the OFF (**0**) position (see Figure 2).
2. Carefully remove the fuel bed and put it carefully on the floor (see Figure 3).
3. Carefully slide the air filter upwards and out of the plastic holder (see Figure 11).

4. Carefully rinse the filter with water in the kitchen sink and dry it with a cloth towel before you return the filter in its place.
5. Put the filter back and make sure that the black filter is at the front side of the fire.
6. Put the fuel bed back.
7. Put switch 'A' in the ON position (I) (see Figure 2).

Additional Information

Recycling



Electrical appliances may not be thrown in the waste bin together with the normal household rubbish at the end of their lifespan. Please use the available recycle facilities.

Customer service

The product's warranty is valid for one year from the date of purchase. Within this period, we repair or replace this product without any charge (with the exception of the light bulbs and depending on availability) and on the condition that the fire has been installed and used according to the aforementioned instructions. Your rights according to this warranty are an addition to your legal rights, which are not affected by this warranty.

If you need service or want to purchase spare parts, please contact the shop in which you bought the fire or call the service telephone number of the country listed on the warranty. Keep your receipt as proof of purchase.

Patent/patent application

Products in the Opti-myst series are protected by one or more of the following patents and patent applications:

Great Britain - GB 2402206 (B), GB 2402206, GB 2460259, GB 2460453, GB 2418014, GB 2465738, GB 2449925, GB 2465537, GB 2455277, GB 2436212, GB 2475794, GB 2475795 GB 1119602.9

United States of America - US 7967690, US 2010299980, US 2011062250, US 2008028648, US 13/167,042

Russia - RU2008140317

Europe - EP 2029941, EP 2201301, EP 2315976, EP 1787063, EP07723217.1, EP11170434.2, EP 11170435.9

China - CN 101883953, CN 200980128666.2, CN 101057105, CN 101438104

Australia - AU 2009248743, AU 2007224634

Canada - CA 2725214, CA 2579444, CA 2645939

South Africa - ZA 200808702

Mexico - MX 2008011712

Korea - KR 20080113235

Japan - JP 2009529649

Brazil - BR P10708894-9

India - IN 4122/KOLNP/2008

New Zealand - NZ 571900

Troubleshooting

Symptom	Reason	Solution
The flame effect does not start.	<p>The power plug is not inserted into the wall socket.</p> <p>Low water level</p> <p>Low voltage plug is not connected well (see Figure 6).</p> <p>The transducer (mist maker) is not correctly installed in the receptacle.</p>	<p>Check whether the plug is properly inserted into the wall socket.</p> <p>Check whether the water reservoir is full and whether water is in the receptacle.</p> <p>Check whether the low voltage plug is properly connected. (Figure 6)</p> <p>Check whether the transducer is properly and entirely in the hole.</p>
The flame effect is too low.	<p>The control knob of the flame effect is set too low (see Figure 2).</p> <p>The metal disk in the transducer may be dirty (see Figure 12).</p> <p>The cable of the transducer (mist maker) runs over the metal disk.</p>	<p>Slowly turn the control knob 'D' clockwise to increase the flame intensity (see Figure 2).</p> <p>Clean the metal disk with the supplied soft brush (see Figure 12 and 'Maintenance' for a step-by-step procedure).</p> <p>Place the cable correctly and let it run outwards via the hole at the back of the receptacle.</p>
Unpleasant smell when the fire is used	<p>Dirty or stale water</p> <p>Using unfiltered tap water</p>	<p>Clean the fire as described in 'Maintenance'.</p> <p>Only use water with a hardness of maximum 10dH or use demineralised or reverse osmosis water.</p>
The flame effect produces too much smoke.	The flame effect is set too high.	<p>Turn the control knob 'C' of the flame effect clockwise (approx. a quarter turn each time). Give the flame mechanism some time to respond to the new setting (see Figure 2).</p>
The main lamps do not work and there are no flames or smoke.	No water in the water reservoir	<p>Follow the instructions described in Maintenance 'Filling the water reservoir'.</p> <p>Check whether the plug is properly inserted into the wall socket.</p> <p>Switch 'A' (Figure 2) is in the ON (I) position.</p>